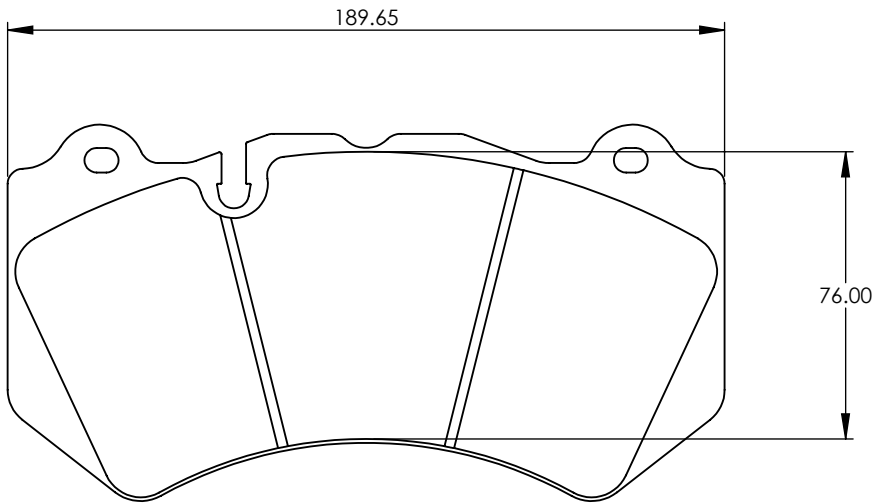



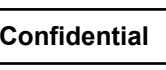
TECHNICAL SPECIFICATION	
GENERAL	
MOUNTING CENTERS	210mm
MOUNTING OFFSET	48mm
PL DIMENSION (MOUNTING FACE TO TOP OF PAD)	70mm
U DIM'N (AXLE \varnothing TO CALIPER MOUNTING FACE)	135mm
CALIPER BODY MATERIAL	ALUMINIUM ALLOY
CALIPER BODY FINISH	HARD ANODISED
EFFECTIVE RADIUS	R152
PISTON DIAMETERS	Ø26 Ø32 Ø38
TOTAL PISTON AREA	50.5cm²
PISTON MATERIAL	STAINLESS STEEL
MASS WITHOUT PADS	3.96 kg
ANTI KNOCK OFF SPRINGS	~
DISC INFORMATION	
DIAMETER	Ø380mm
THICKNESS	34mm

TIGHTENING TORQUE VALUES	
SERVICING	
BLEEDSCREW	17Nm
INSTALLATION (GUIDANCE ONLY)	
INLET FITTING	M10x1 Fittings and Banjo bolts: - With one copper gasket: - 13Nm + 45° - With two copper gaskets: - 13Nm + 90° Maximum torque must not exceed 30Nm
UPRIGHT MOUNTING BOLTS	97Nm (use Loctite 243 Thread lock)

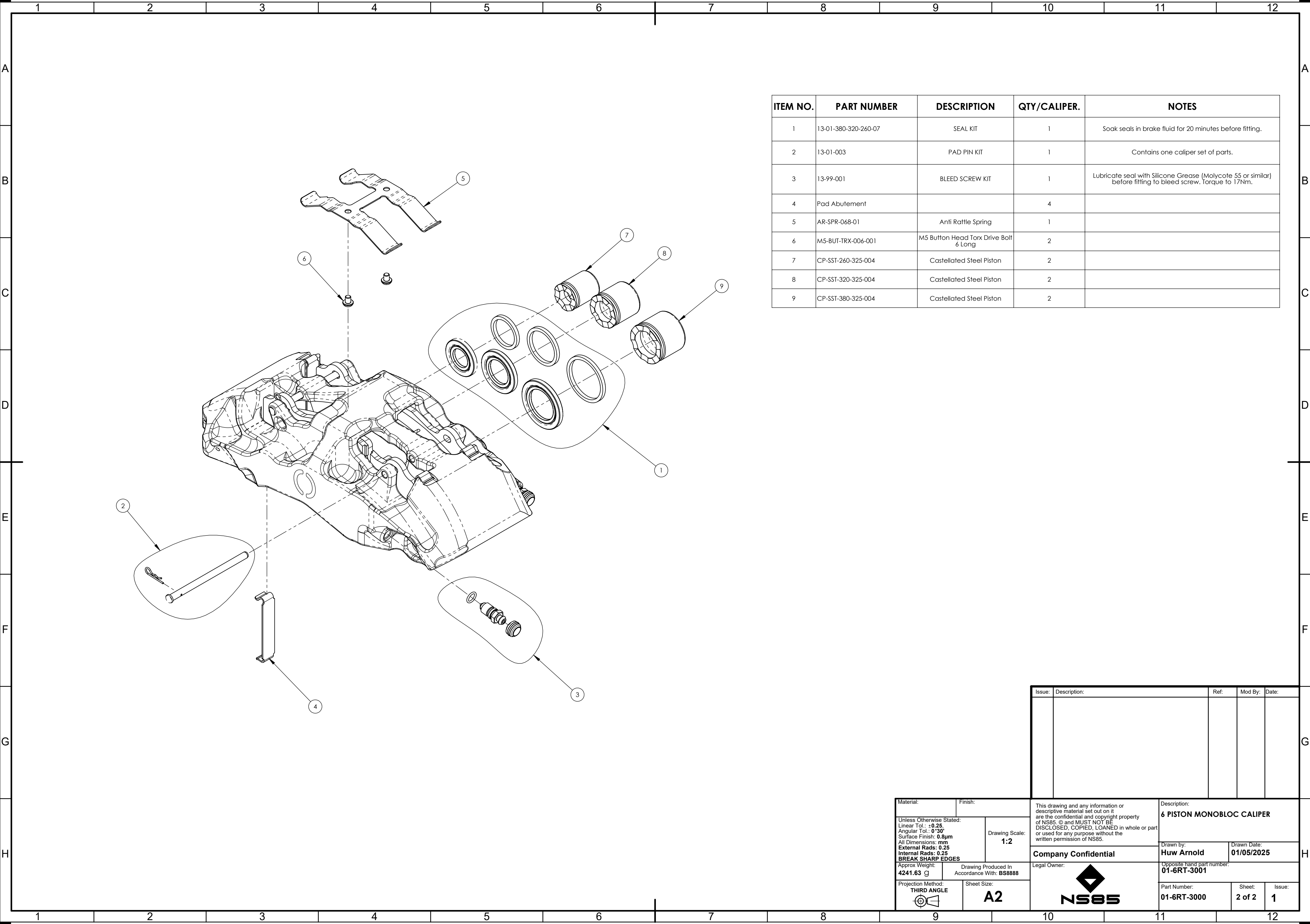


PAD DETAILS	
PAD SHAPE	PAGID 8083
PAD THICKNESS	16.5mm
SWEPT DEPTH	76mm
PAD AREA	120cm²
PAD VOLUME	132cm³

Issue:	Description:	Ref:	Mod By:	Date:
01	First Issue	##	HA	07/10/2024


Material:		Finish:		This drawing and any information or descriptive material set out on it are the confidential and copyright property of NS85. © and MUST NOT BE DISCLOSED, COPIED, LOANED in whole or part or used for any purpose without the written permission of NS85.		Description:					
Unless Otherwise Stated: Linear Tol.: ± 0.25 Angular Tol.: 0°30' Surface Finish: 0.8µm All Dimensions: mm External Rads: 0.25 Internal Rads: 0.25 BREAK SHARP EDGES		Drawing Scale: 1:2				6 PISTON MONOBLOC CALIPER					
Approx Weight: 4241.63 g		Drawing Produced In Accordance With: BS8888		Company Confidential		Legal Owner:					
Projection Method: THIRD ANGLE 		Sheet Size: A2				Drawn by: Huw Arnold		Drawn Date: 01/05/2025			
						Opposite hand part number: 01-6RT-3001					
						Part Number: 01-6RT-3000		Sheet: 1 of 2		Issue: 1	

SEE SHEET 2 FOR SPARES



ITEM NO.	PART NUMBER	DESCRIPTION	QTY/CALIPER.	NOTES
1	13-01-380-320-260-07	SEAL KIT	1	Soak seals in brake fluid for 20 minutes before fitting.
2	13-01-003	PAD PIN KIT	1	Contains one caliper set of parts.
3	13-99-001	BLEED SCREW KIT	1	Lubricate seal with Silicone Grease (Molycote 55 or similar) before fitting to bleed screw. Torque to 17Nm.
4	Pad Abutement		4	
5	AR-SPR-068-01	Anti Rattle Spring	1	
6	M5-BUT-TRX-006-001	M5 Button Head Torx Drive Bolt 6 Long	2	
7	CP-SST-260-325-004	Castellated Steel Piston	2	
8	CP-SST-320-325-004	Castellated Steel Piston	2	
9	CP-SST-380-325-004	Castellated Steel Piston	2	

Issue:	Description:	Ref:	Mod By:	Date:

Material:		Finish:		This drawing and any information or descriptive material set out on it are the confidential and copyright property of NS85. © and MUST NOT BE DISCLOSED, COPIED, LOANED in whole or part or used for any purpose without the written permission of NS85.	Description:		
Unless Otherwise Stated: Linear Tol.: ±0.25 Angular Tol.: 0°30' Surface Finish: 0.8µm All Dimensions: mm External Rads: 0.25 Internal Rads: 0.25 BREAK SHARP EDGES			Drawing Scale: 1:2		6 PISTON MONOBLOC CALIPER		
Approx Weight: 4241.63 g		Drawing Produced In Accordance With: BS8888			Drawn by: Huw Arnold		Drawn Date: 01/05/2025
Projection Method: THIRD ANGLE		Sheet Size: A2			Opposite hand part number: 01-6RT-3001		
					Part Number: 01-6RT-3000		
					Sheet: 2 of 2		
				Issue: 1			